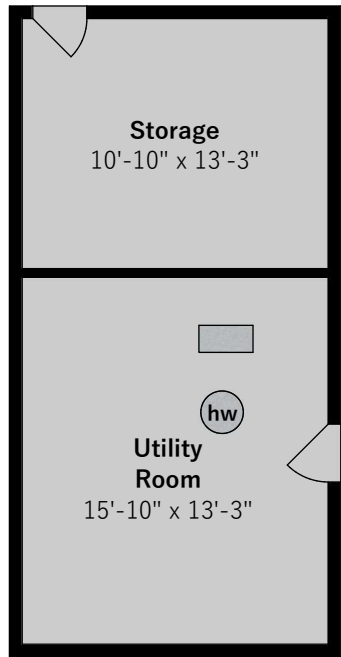


# 5 Evirel Place

Oakland, CA 94611



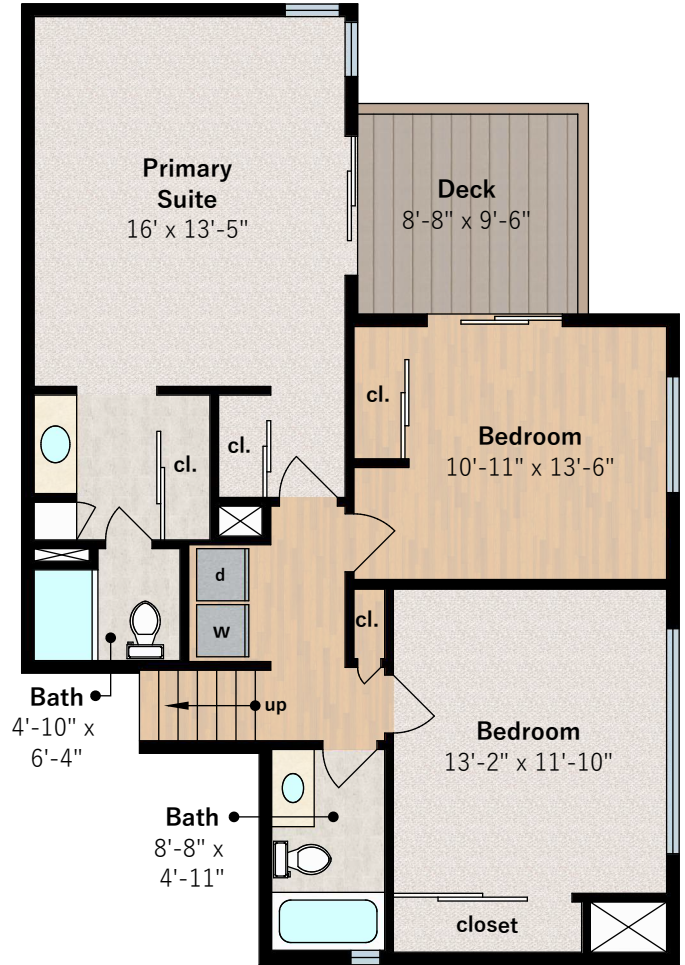
**Garage**  
approx. 471 sqft



**Lower Level**  
approx. 379 sqft



**Main Level**  
approx. 928 sqft



**Upper Level**  
approx. 880 sqft

**Estimated Total Finished Square Footage: 1,808 sqft**  
Main Level: 928 sqft  
Upper Level: 880 sqft

**Estimated Total Unfinished Square Footage: 850 sqft**  
Lower Level: 379 sqft  
Garage: 471 sqft

Interior room dimensions are shown, and all square footage measured from perimeter of exterior walls. Decks, porches, and patios are not included in calculations.  
Measured on May 10th, 2024

Any and all information on this drawing is for illustrative purposes only and is deemed reliable, but not guaranteed. All information requires independent verification.



[www.heafeybaum.com](http://www.heafeybaum.com)